



ANNE CLEMENTS & ASSOCIATES PTY. LIMITED
(ABN 41 077 242 365, ACN 077-160-939)
Environmental and Botanical Consultants
PO Box 1623, North Sydney 2059
Phone: (02) 9955 9733, Facsimile: (02) 9957 4343
Email: mail@acabotanic.com

30 September 2014

Proposed Tree Removal for:

- Upgrading of the existing Deepwater Motorboat Club Lot D DP 391154 and Lot A DP 405225, No 30 and 31 Webster St, Milperra; and
- Upgrading of the existing Webster Street for the provision of a flood evacuation route.

The trees to be removed are detailed in Clements *et al.* (2014) reports are as follows:

For the Motorboat Club Site:

Upgrading of the existing Deepwater Motorboat Club Lot D DP 391154 and Lot A DP 405225, No 30 and 31 Webster St, Milperra.

A. *Flora assessment*

B. *Assessment of Significance*

dated 10 March 2014

For the upgrading of the existing Webster Street

Assessment of Significance: Upgrading the existing Webster Street for the provision of a flood evacuation route for the upgrading of the existing Deepwater Motorboat Club, Milperra.

dated 2 September 2014

For the Motorboat Club Site:

It was found in the flora assessment that:

On the Motorboat Club site, there were 155 surveyed trees or groups of trees in total.

It is concluded that:

- *77 trees are definitely and probably remnant and in good or moderate health; and*
- *78 trees are planted, or possible or likely remnant and in very poor health.*

The 77 remnant trees are of conservation significance. A total of 60 of the 77 trees are located on the Motorboat Club Site with the other 17 on the Deepwater Park lands.

Part B:

Of the 155 trees assessed, 77 trees were definitely or probably remnant and in good health (or moderate health). Sixty (60) of the 77 remnant trees are located on the Motorboat Club site. These trees, except one tree in mapped River-Flat Eucalypt Forest, are isolated remnants of the former occurrence of River-Flat Eucalypt Forest. These 59 isolated remnant trees are not part of an endangered ecological community under the NSW TSC Act or the

Commonwealth EPBC Act, but are of regional and local conservation significance.

On the Motorboat Clubhouse Site, 17 out of 59 isolated remnant trees of the former occurrence of River-Flat Eucalypt Forest are proposed to be removed. These isolated remnant trees are of regional and local conservation significance.

Hence, we have categorised trees into remnant native and planted local species.

Proposed removal on the Motorboat Club Site (Figure B3 from Assessment of Significance) are as follows:

15 healthy locally remnant trees (formerly part of the River-flat Forest):

Location	Tree Number (Morton or ACA)	Species
Southern extension of Motorboat Club	9, 10, 12	<i>Eucalyptus moluccana</i>
	11	<i>Eucalyptus baueriana</i>
Northern extension of Motorboat Club	22	<i>Eucalyptus moluccana</i>
Carpark	94*, 97, 98, 109*, 117, 118, 119	<i>Eucalyptus moluccana</i>
	100, 101	<i>Eucalyptus baueriana</i>
	103	<i>Angophora floribunda</i>
	108	<i>Eucalyptus paniculata</i>
	99	<i>Melaleuca decora</i>

* From email of Claire Jones of WorleyParsons Services Pty Limited (dated 30 September 2014), Trees 94 and 109 are being retained through the revised design.

2 remnant native trees in poor health:

- Tree 92, a local remnant *E. moluccana*, was almost dead with extensive canopy dieback; and
- Tree 110, a local remnant *Eucalyptus paniculata*, was showing substantial dieback.

6 planted native trees are:

- Tree 8 proposed for removal, south of the clubhouse, is a *Corymbia maculata* (Spotted Gum), is a non-local native in this part of Sydney; and
- Trees 47-50 (*Eucalyptus tereticornis*) and Tree 120 (group of *Melaleuca styphelioides*) are locally native tree species but not considered remnant. They appear to be growing on fill.

In conclusion, there are 23 native trees (15 remnant, 2 dead and dying, 6 planted) proposed to be removed on the Motorboat Club Site (tree location shown on Figure B3).

Trees 24 to 37 to be removed are exotic trees exempt from Bankstown Council Tree Protection Order - *Syagrus romanzoffiana* (Cocos Palm) and *Olea europaea* subsp. *cuspidata* (African Olive).

For the upgrading of the existing Webster Street:

A total of 11 isolated healthy local remnant trees south of Webster Street are to be removed (locations of observation points shown on revised Figure 2b and 3a for the Webster Street report), namely:

Approximate Chainage	Trees	Located
270 m (Observation Point F)	2x <i>Eucalyptus moluccana</i> (20 m)	2 m south of existing carparking bays
290-300 (Observation Point A)	1x <i>Melaleuca styphelioides</i> (7 m) 2x <i>Casuarina glauca</i> (5 m)	in square between existing carparking bays
290-300 (Observation Point A)	3x <i>Eucalyptus moluccana</i> (20 m)	5 m further south of square between existing carparking bays
375 (Observation Point C)	1x <i>Casuarina glauca</i> (18 m)	in carparking bay
460 (Observation Point D)	1x <i>Melaleuca styphelioides</i> (4 m tall)	on south side of existing road
470 (observation Point E)	1x <i>Melaleuca decora</i> (6 m tall)	5 m south of existing road

A total of 0.015 to 0.03 ha (150 to 300 m²) of Swamp Oak Floodplain Forest is to be removed. The patch is approximately 30 m long and approximately 5-10 m wide of *Casuarina glauca* and *Melaleuca styphelioides* with an understorey dominated by exotic grass *Ehrharta erecta* adjoining the car park bays (see notes Observation Point B in Table 1 of the Webster Street report, locations of observation points shown on the revised Figure 2b and 3a for the Webster Street report).

In conclusion, the tree removal required is as follows:

- 23 native trees (15 remnant, 2 dead and dying, 6 planted) on the Motorboat Club Site
- 11 isolated healthy local remnant trees south of Webster Street
- 0.015 to 0.03 ha of Swamp Oak Floodplain Forest along the proposed upgrading of Webster Street;

The 34 (23 +11) native trees are 28 local remnant, 5 planted local and 1 non-local native tree, namely:

- 15 *Eucalyptus moluccana*; (1 in very poor health);
- 3 *Eucalyptus baueriana*;
- 2 *Eucalyptus paniculata*; (1 in poor health);
- 1 *Angophora floribunda*;
- 3 *Casuarina glauca*;
- 3 *Melaleuca styphelioides* (1 planted);
- 4 *Eucalyptus tereticornis* (all planted);
- 2 *Melaleuca decora*; and
- 1 *Corymbia maculata* (non-local native).

Attached:

Figure	Showing
B3 of Motorboat Club report	Tree removal plan (Context DWG LSK 13609-102-B, dated 27 February 2014)
Revised 2b of Webster Street Report	Chainage along centreline of proposed road with observation points undertaken for trees on 1 September 2014
Revised 3a of Webster Street Report	Quadrats, Observation Points and conservationally significant vegetation mapping along Webster Street

Figures

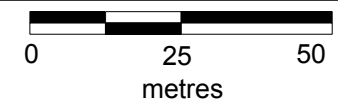


Figure 2b.
Chainage along centreline of proposed road
with observation points undertaken for trees on 1 September 2014



- Observation points (February 2014) ★ Observation points (Sep 2014) ★ *Acacia pubescens* recorded
- Quadrats
- ▨ River-flat Eucalypt Forest on Coastal Floodplains
- ▨ Low-lying Swamp Oak Floodplain Forest with estuarine wetlands
- ▨ Cooks River Castlereagh Ironbark Forest / Shale Gravel Transition Forest
- ▨ Mangrove Vegetation

0 40 80
metres

Figure 3a.
Quadrats, Observation Points and conservationally
significant vegetation mapping along Webster Street